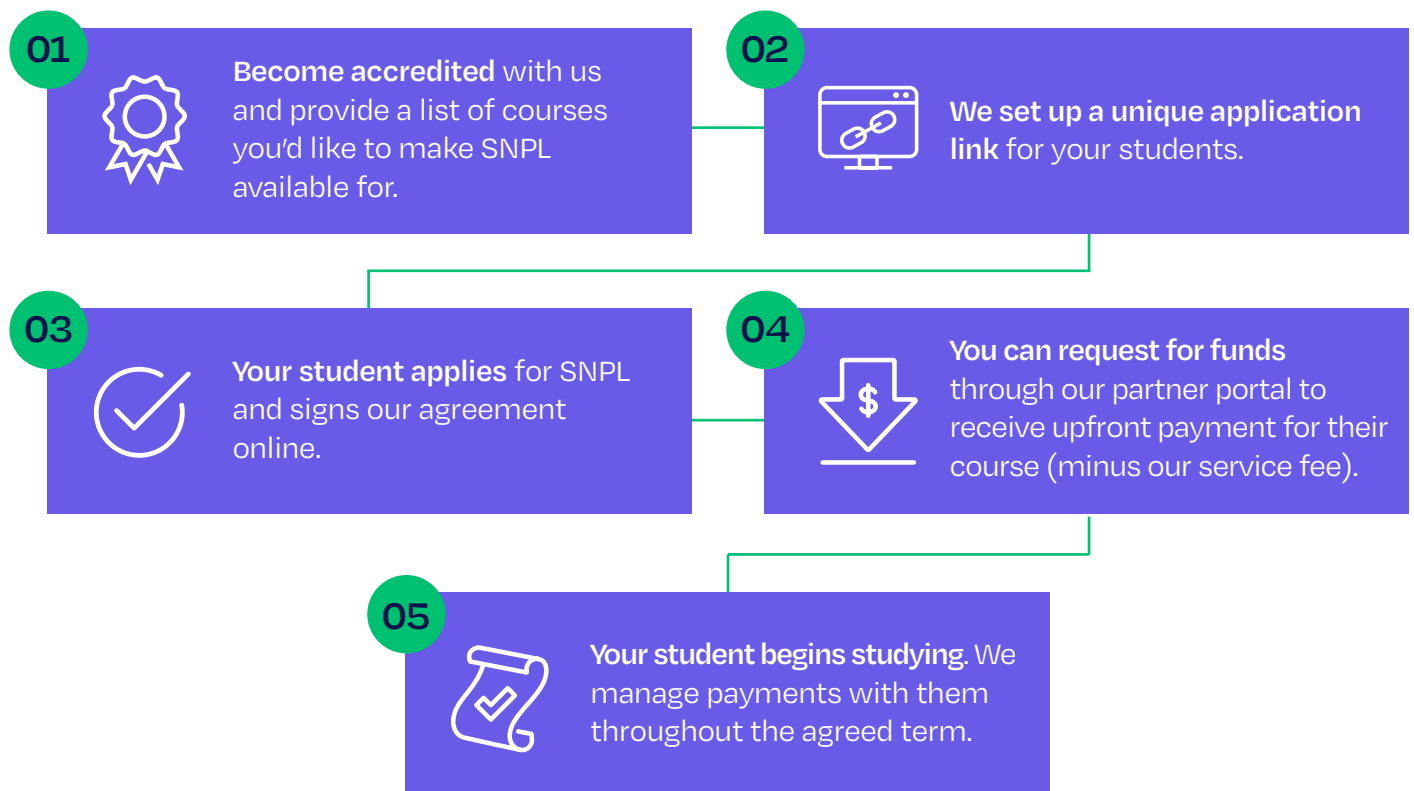


# Study Now Pay Later



## Grow your offering. Grow enrolments

Study Now Pay Later (SNPL) removes the financial barriers that stand in the way of enrolling students who want to study with you. With SNPL, students can spread their course cost over 36 months with flexible, interest-free payments. Meanwhile, you get paid upfront – providing cashflow certainty so you can plan and grow.



### What does ZeeFi's unparalleled education sector expertise mean for you?

<b>Increased enrolments</b>	We have high acceptance rates and a suite of solutions to help you increase enrolments.
<b>Release working capital</b>	With increased enrolments and upfront payments, you have access to working capital to fund growth.
<b>Risk free</b>	You get paid upfront while we collect student payments and bear the risk of non-payment.
<b>Safe + simple</b>	We handle all admin from application to payment completion. There are no lock-in contracts or set-up fees and we process student applications within minutes.
<b>Compliance guaranteed</b>	Our solution ensures you maintain compliance and meet industry standards.

### Questions?

Contact one of our account managers today to discuss Study Now Pay Later for your business. For more information, [download the full brochure with FAQs here](#).

**Email** [support@zeefi.io](mailto:support@zeefi.io) **Call** 1800 324 909

Credit Criteria, Terms and Conditions, fees and charges apply. When discussing this product with prospective students you should consider whether this product is right for them based on their needs, objectives and financial situation. Please refer to our [Target Market Determination \(TMD\)](#). The TMD outlines the unique features of this product to assist you and the student in determining their suitability. ZeeFi Pty Ltd (ABN 13 613 345 314) Australian Credit Licence 498589 whose registered office is at Level 5, 447 Collins Street, Melbourne, 3000.